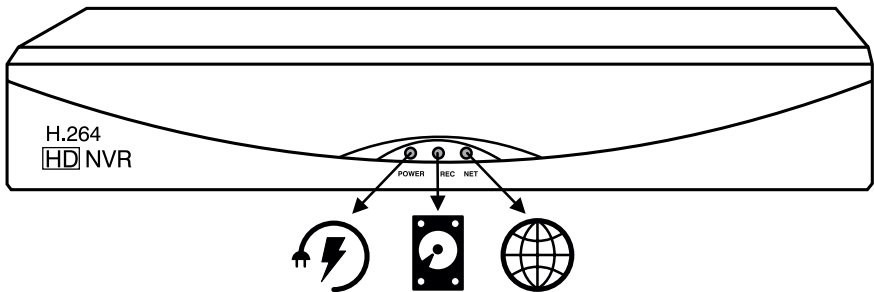




MANUAL – NVR903

UK - DK - SE - NO - FI

SafeHome[®] Network Video Recorder



For expanded manual in English
– please visit www.SafeHome.dk



In the box / I kassen / I lådan / I boksen / laatikossa

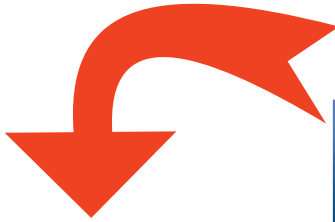


Table of Content / Indholdsfortegnelse/ Innehållsförteckning/ Innholdsfortegnelse/ Sisällysluettelo

Typical Application Typisk anvendelse / Typisk applikation / Typisk application / Tyypillisiä käyttökohteita 3
Specifications Spesifikationer / Specifikationer / Spesifikasjoner / Tekniset tiedot 4
Installation of HDD Installation af HDD / Installation av HDD / Installasjon av HDD / Asennus HDD 6
Connections Tilslutninger / Anslutningar / Tilkoblinger / Liitännät 7
Setup Indstilling / Inställning / Setup / Perustaa 7
General Setup Generel opsætning / Allmän inställning / Generelt oppsett / Yleiset asetukset 8
Select Cameras Vælg kameraer / Välj kameror / Velg kameraer / Valitse Kamerat 10
Recording Plan Optagelsesplan / Inspelningsplan / Recording Plan / Tallennus Plan 12
Network Setup Netværksopsætning / Nätverksinställningar / Nettverksoppsett / Verkon asennus 14
System Setup Systemopsætning / Systeminstallation / Systemoppsett / Järjestelmän asetukset 16
View Recordings Se optagelser / Se inspelningar / Se optak / Näytä tallenteet 18
Remote Access Fjernadgang / Fjärranslutning / Fjerntilgang / Etäkäyttö 19
APP 20



The HD NVR is a stand-alone device for scheduled recording/surveillance of up to 4 SafeHome M- and X-series cameras. For compability with other cameras please see our website.

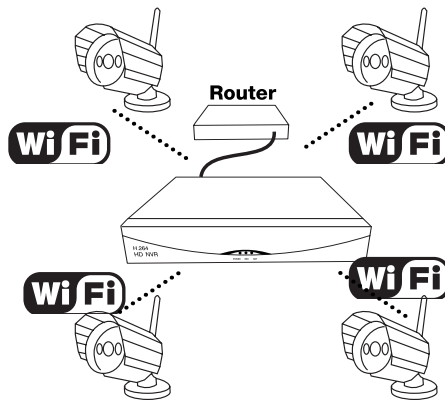
The HD NVR has to be connected to your router by cable.

Network setup is done by connecting the NVR to a monitor or TV by use of a VGA or HDMI cable (only HDMI included).

When the NVR is connected to the network, it can be accessed from any Windows PC on the network, tablet and smartphone using our App, or through the Internet by using the assigned local IP address or the router's WAN IP address.

Cameras on local network are automatically detected. Recording, replay and livestreaming is easily setup.

**Typical Application / Typisk anvendelse / Typisk applikation /
Typisk application / Tyypillisiä käyttökohteita**



Harddisk Capacities (approx. recording time)

Cams /resolution	500 GB	1 TB	2 TB	4 TB
1 cam VGA res.	56 days	112 days	224 days	448 days
4 cams VGA res.	14 days	28 days	56 days	112 days
1 cam 1MP HD res.	14 days	28 days	56 days	112 days
4 cams 1MP HD res.	3.5 days	7 days	14 days	28 days
1 cam 2MP HD res.	6.5 days	13 days	26 days	52 days
4 cams 2MP HD res.	1.7 days	3.4 days	6.8 days	13.6 days

HDD must usually be purchased separately and installed

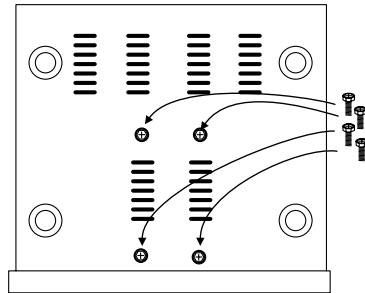
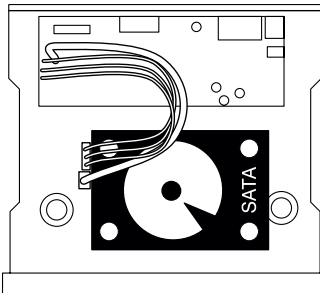
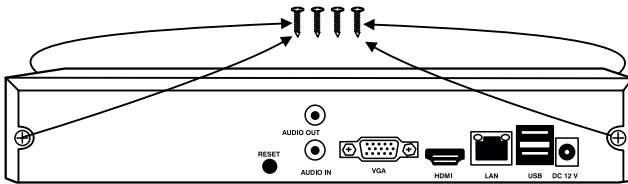
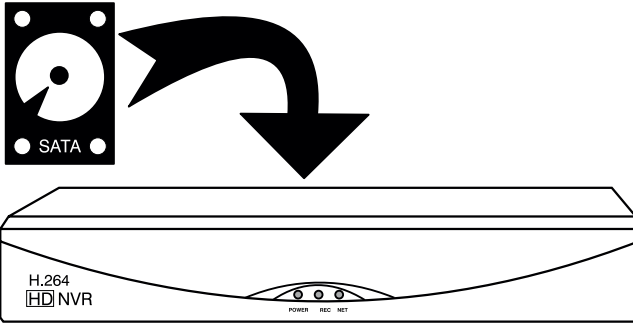
Specifications / Specifikationer / Specifikationer / Spesifikasjoner / Tekniset tiedot

- Compatible with SafeHome M- and X-series IP camera. For compatibility with other cameras please see our website.
- H.264 format storage
- Built-in software
- Setup connection: VGA /HDMI (VGA cable not incl., HDMI incl.)
- Access connection: VGA/HDMI/HTTP
- Network protocol: TCP/IP, UDP/IP, HTTP, NTP, UPnP, DDNS, P2P, ONVIF
- LAN connection (cable incl.): 10Base-T/100Base-TX(RJ-45)
- Harddisk: Up to 1 x 4 TB, 3.5" SATA.
- USB ports: 2 USB 2.0 (for mouse/backup/update)
- Audio input: 1 RCA port (Linear Level)
- Audio output: 1 RCA port (Linear Level)
- Operating temperatures: $\pm 10-40$ °C
- Operating humidity: 10-90 % RH
- Dimensions, mm (L x W x H): 258 x 241 x 45
- Weight without harddisk: 1.050 g
- Power Supply (in/out): 100-240 V (50/60 Hz) / 12 V, Power cons. < 6 W (Power supply incl.)

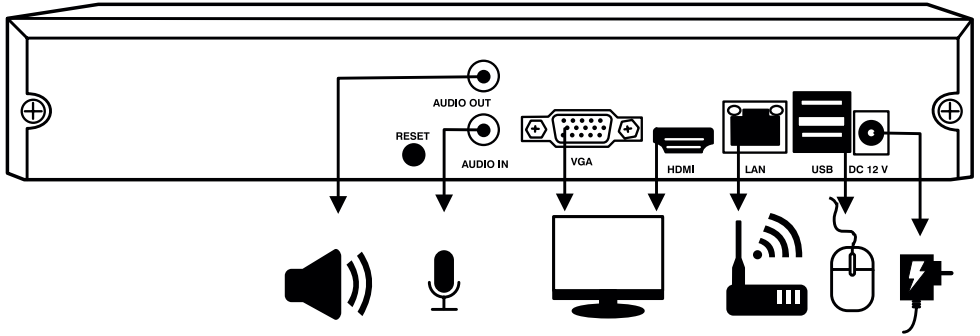
Installation of HDD / Installation af HDD / Installation av HDD /
Installasjon av HDD / Asennus HDD

HDD – MAX 4TB SATA

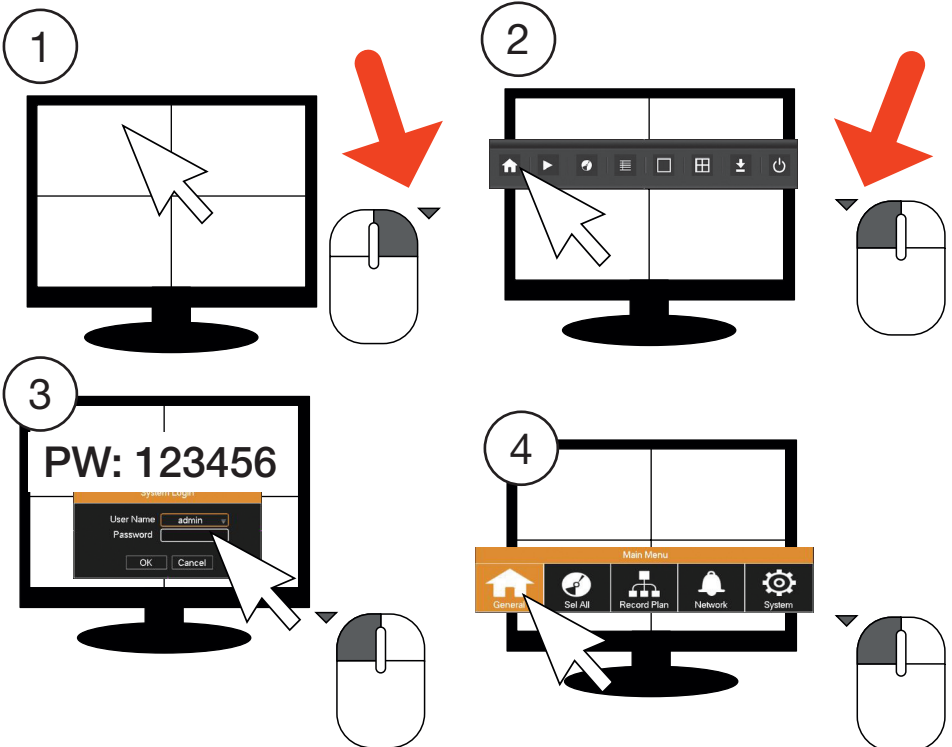
Requested but
not included



Connections / Tilslutninger / Anslutningar / Tilkoblinger / Liitännät



Setup / Indstilling / Inställning / Setup / Perustaa



General Setup / General opsætning / Allmän inställning /
Generelt oppsett / Yleiset asetukset

1

2

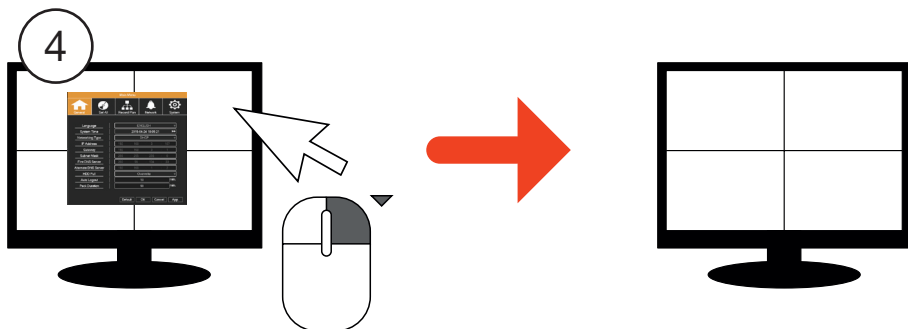
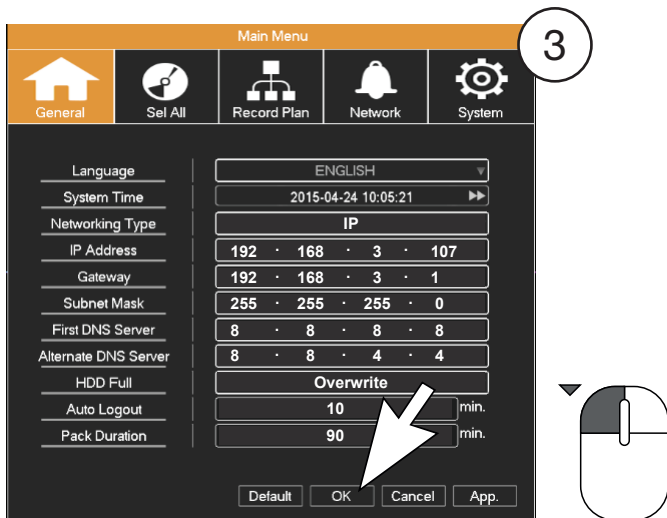
DHCP IP

EXAMPLE

DHCP IP

Auto Logout: Max 60 min.
Pack Duration: Max 90 min.

SATA



Select Cameras / Vælg kameraer / Välj kameror / Velg kameraer / Valitse Kamerat

Main Menu

General Sel All Record Plan Network System

Channel: 1
Protocol: HY_X_IPC
IP Address: 192.168.3.116
Port: 80
User Name: admin
Password: ●●●●●●
MAC Address: D8:A3:C3:A4:D5:A1

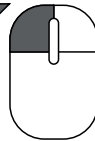
Bit Rate Control: FRI_STREAM
Bitrate Volum: 4096Kb/s
Frame Rate(FPS): 25

Connect Disconnect IPC Encodset

0	Device Info	MAC Address	Sender IP Address	Port
---	-------------	-------------	-------------------	------

Protocol: HY_X_IPC Search

HY_X_IPC: Serie X
HY_M_IPC: Serie M
ONVIF: ONVIF



Main Menu

General Sel All Record Plan Network System

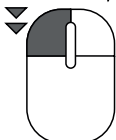
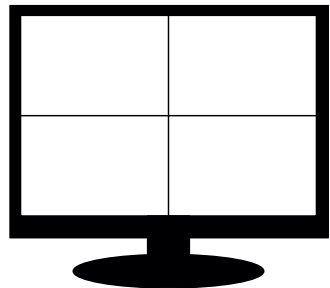
Channel: 1
Protocol: HY_X_IPC
IP Address: 192.168.3.116
Port: 80
User Name: admin
Password: ●●●●●●
MAC Address: D8:A3:C3:A4:D5:A1

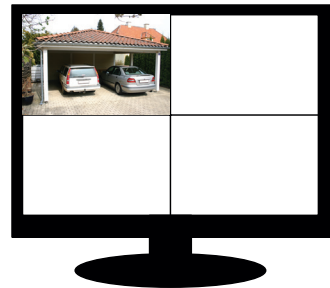
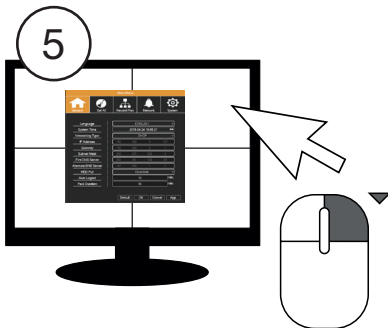
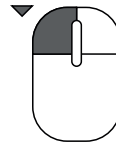
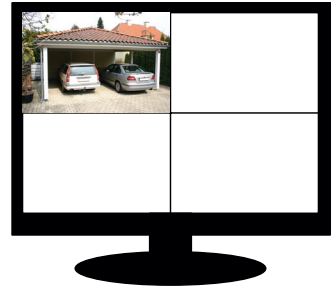
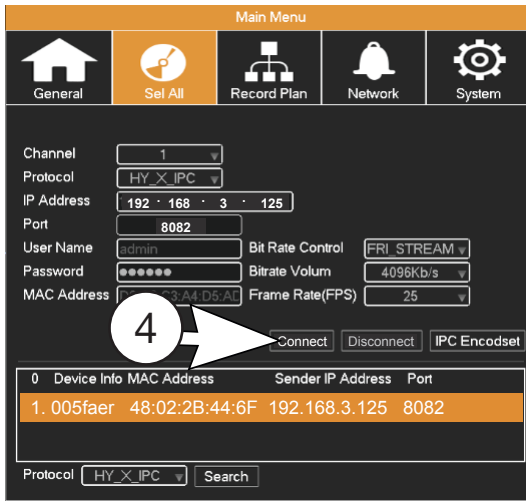
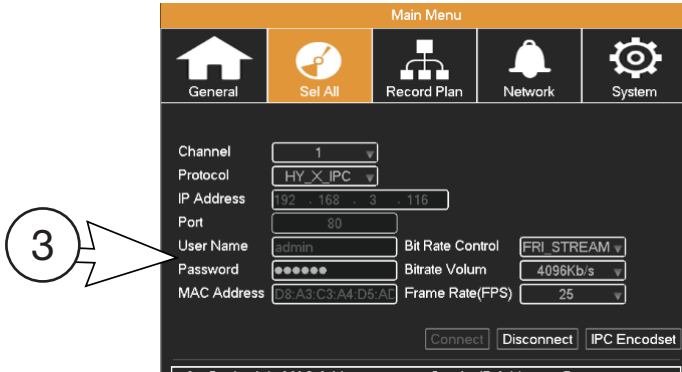
Bit Rate Control: FRI_STREAM
Bitrate Volum: 4096Kb/s
Frame Rate(FPS): 25

Connect Disconnect IPC Encodset

0	Device Info	MAC Address	Sender IP Address	Port
1	005faer	48:02:2B:44:6F	192.168.3.125	8082

Protocol: HY_X_IPC Search





Recording Plan / Optagelsesplan / Inspelningsplan / Recording Plan / Tallennus Plan

Main Menu

General Sel All Record Plan Network System

Channel 1

Planned recording type Regular

Regular Alarm

Sun. 0 1 2 3 4 5 6 7 8 9 10 11 12 13 14 15 16 17 18 19 20 21 22 23

Mon. [Grid]

Tue. [Grid]

Wed. [Grid]

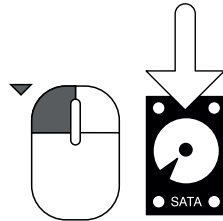
Thu. [Grid]

Fri. [Grid]

Sat. [Grid]

Scheduled recording time Select All Clear All

Copy Refresh OK App. Cancel



Main Menu

General Sel All Record Plan Network System

Channel 1

Planned recording type Regular

Sun. 0 1 2 3 4 5 6 7 8 9 10 11 12 13 14 15 16 17 18

Mon. [Grid]

Tue. [Grid]

Wed. [Grid]

Thu. [Grid]

Fri. [Grid]

Sat. [Grid]

Scheduled recording time Select All Clear All

Copy Refresh OK App. Cancel

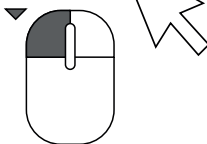
Copy

Channel

1 2 3 4

Sel All

OK Cancel



Main Menu

General | Sel All | **Record Plan** | Network | System

Channel: 1

Planned recording type: **Alarm**

	0	1	2	3	4	5	6	7	8	9	10	11	12	13	14	15	16	17	18	19	20	21	22	23
Sun.	[Green grid]																							
Mon.	[Green grid]																							

Regular Alarm



IP CAMERA

VIEW | MEDIA | NETWORK | **ALARM**

Motion Detection

Window1 Window2 Window3 Window4
 Sensitivity: [52] Sensitivity: [20] Sensitivity: [70] Sensitivity: [50]

IP CAMERA

VIEW | MEDIA | NETWORK | **ALARM**

Schedule

	4	5	6	7	8	9	10	11	12	13	14	15	16	17
Sun	[Green grid]													
Mon	[Green grid]													
Tue	[Green grid]													
Wed	[Green grid]													
Thu	[Green grid]													
Fri	[Green grid]													
Sat	[Green grid]													

Apply Select all time Clear all time

1

2

Main Menu

General | Sel All | **Record Plan** | Network | System

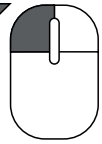
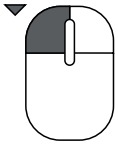
Channel: 1

Planned recording type: **Alarm**

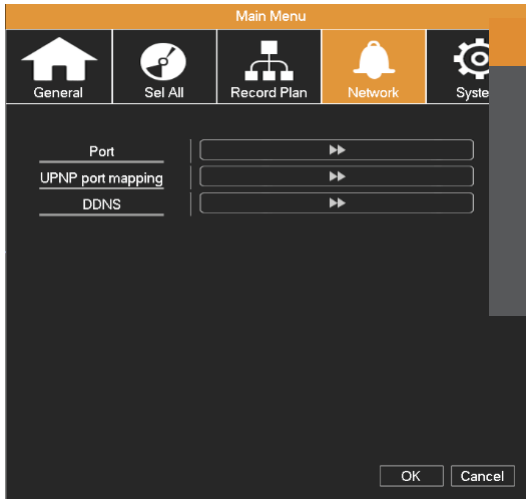
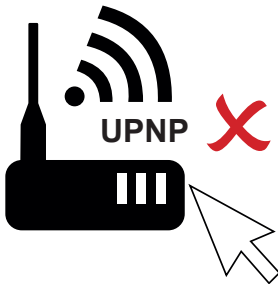
	0	1	2	3	4	5	6	7	8	9	10	11	12	13	14	15	16	17	18	19	20	21	22	23
Sun.	[Green grid]																							
Mon.	[Green grid]																							
Tue.	[Green grid]																							
Wed.	[Green grid]																							
Thu.	[Green grid]																							
Fri.	[Green grid]																							
Sat.	[Green grid]																							

Scheduled recording time: **Select All** **Clear All**

Copy Refresh OK **App** Cancel

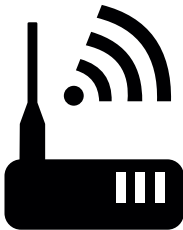
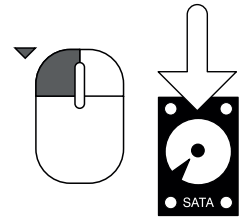


Network Setup / Netværksopsætning / Nätverksinställningar /
Nettverksoppsett / Verkon asennus



TCP Port 8000
HTTP Port 8080

OK Cancel App



ROUTER

NAT:

Port: 8000 > 192.168.3.107

Port: 8080 > 192.168.3.107



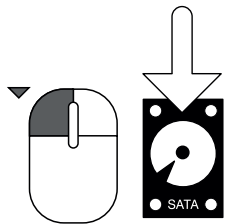


EXAMPLE

UPNP port mapping

Active	<input checked="" type="checkbox"/>
HTTP Port	<input type="text" value="8000"/>
TCP Port	<input type="text" value="8080"/>

Please confirm UPNP function on the router have enabled.



LAN (local)

WAN (remote)

System Setup / Systemopsætning / Systeminstallation /
Systemoppsett / Järjestelmän asetukset

Main Menu

General

Sel All


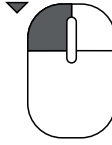
Record Plan

Network

System

- HDD Manage
- Display
- Backup
- Account
- Default
- Auto Maintain
- Alarm Set
- Upgrade

▶▶
▶▶
▶▶
▶▶
▶▶
▶▶
▶▶
▶▶

Backup

1	Name(Type)	Free/Total	Device Status
1	<input checked="" type="checkbox"/> sdf1(USB DISK)	29.30 GB/29.32 GB	Ready

Back-up

Selected Device: sdf1(USB DISK)

Type: All Channel: 1

Start Time: 2015 . 04 . 24 00 : 00 : 00 Remove All

End Time: 2015 . 04 . 24 10 : 09 : 57 Add

2	CH	Type	Start Time	End Time	Size(KB)
1	<input checked="" type="checkbox"/>	1 R	15.04.24 09:14:01	15.04.24 09:20:59	125296
2	<input checked="" type="checkbox"/>	1 R	15.04.24 09:21:51	15.04.24 10:09:57	791696

PageUp
PageDown
Select/Cancel back-up device
AVI

Remaining time 0:14:16
Stop

Detect
Back-up
Erase
Stop

OK

Main Menu


General Sel All Record Plan Network System

HDD Manage
Display
Backup
Account
Default
Auto Maintain
Alarm Set
Upgrade

Account

User	Group	Status
1 admin	admin	Login Local
2 user	user	Normal
3 default	user	Default User

Add User Modify User Password OK



Main Menu

General Sel All Record Plan Network System

HDD Manage
Display
Backup
Account
Default
Auto Maintain
Alarm Set
Upgrade

Default

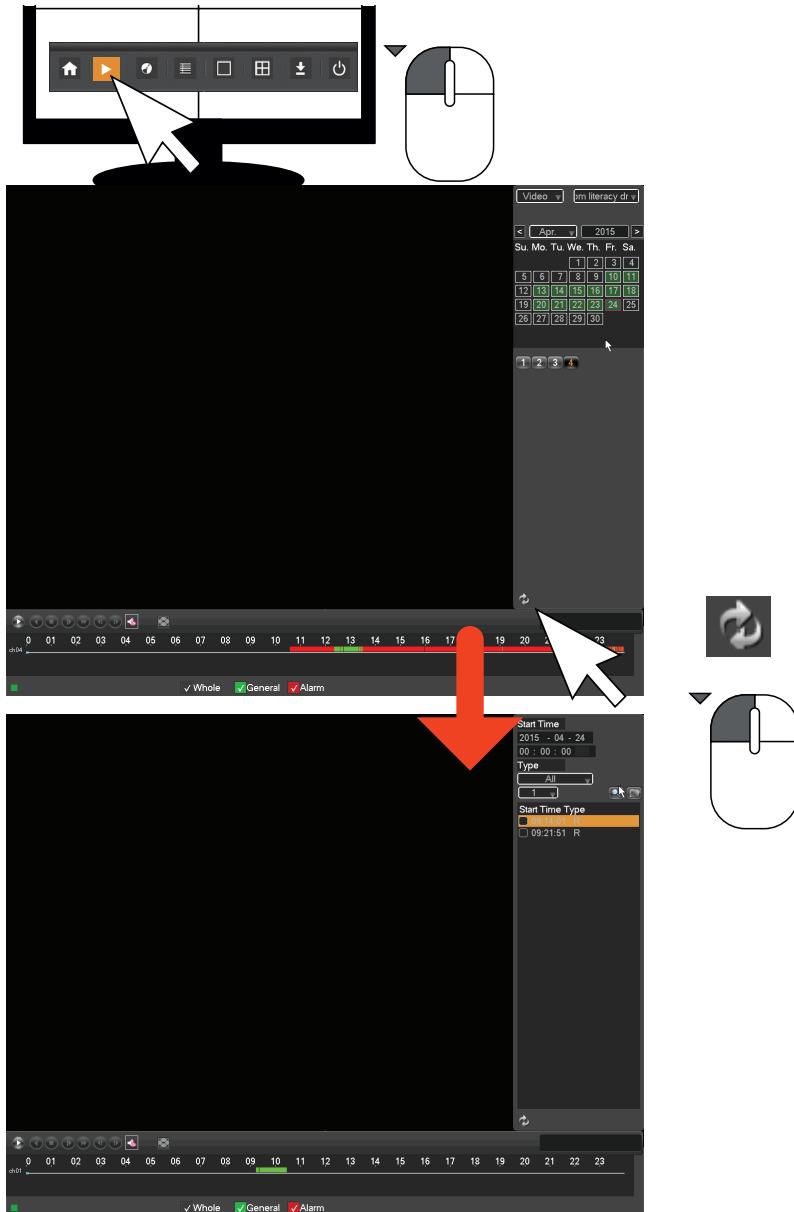
Please select setting entries that you want to default.

- Sel All
- |_Base
- |_Plan
- System Config
- Abnormity
- Net Config
- Auto Maintain

OK Cancel App.



View Recordings / Se optagelser / Se inspelningar /
Se optak / Näytä tallenteet



Remote Access / Fjernadgang / Fjärranslutning / Fjerntilgang / Etäkäyttö



EXAMPLE



http://123.456.23.45:8000 ~ (WAN IP):8000

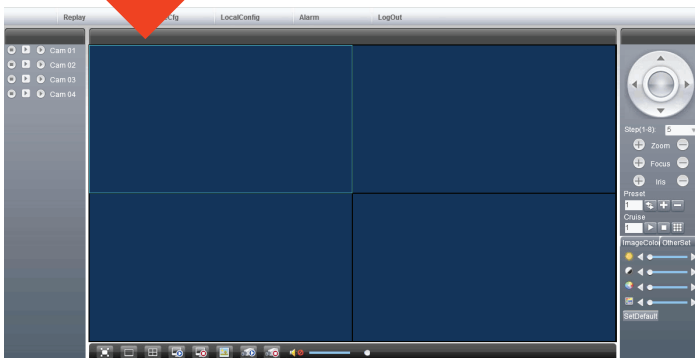
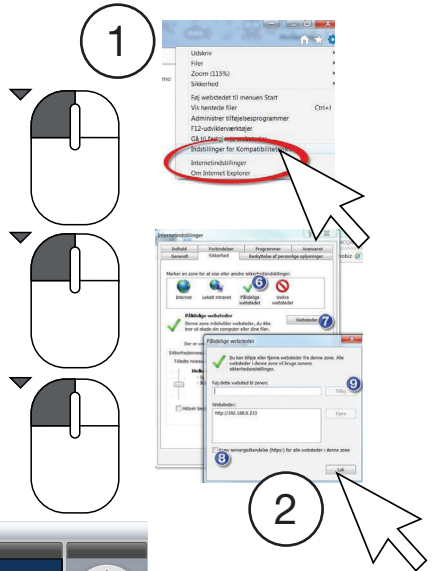
PW: 123456

Username

Password

Login

[Download the Activex](#)





App: SafeHomeSmartP2P



All copyrights, trademarks and registered trademarks are the property of their respective owners.

Disclaimer

SafeHome ApS accept no liability for any errors or omissions in any respect.

This product should not be operated by children or persons who are likely not to have adequate psyche or physique to operate it properly. Operation is always supported by competent adult user. The product is not a toy and should never be used as such. Possibly, corrections will be made without further notice.

We disclaim any responsibility for errors, accidents, damage and accidents arising from the use of SafeHome Network Video Recorder NVR903.

For support and more information: www.safehome.dk

Ansvarsfraskrivelse

SafeHome ApS tager forbehold for evt. fejl og mangler i ethvert henseende. Produktet må ikke betjenes af børn eller personer, der kan forventes ikke at have fornøden psyke eller fysik til at betjene det korrekt. Betjening skal altid supporteres af kompetent voksen bruger. Produktet er ikke legetøj, og må aldrig benyttes som sådant. Evt. rettelser vil blive foretaget uden yderligere varsel.

Vi fraskriver os ethvert ansvar for fejl, uheld, gener og ulykker opstået i forbindelse med brug af SafeHome Network Video Recorder NVR903.

For support og yderligere information: www.safehome.dk

Friskrivningsklausul

SafeHome ApS reserverar sig för ev. fel och brister i alla avseenden. Produkten får inte användas av barn eller personer som inte har tillräcklig mental och fysisk förmåga för att använda enheten på rätt sätt. Användning ska alltid ske under övervakning av en kompetent vuxen användare. Produkten är ingen leksak och får aldrig användas som en sådan. Ev. rättelser görs utan ytterligare meddelande.

Vi friskriver oss från ansvar för fel, olyckor, olägenheter och störningar som uppstår i samband med användning av SafeHome Network Video Recorder NVR903.

Om du vill ha support eller ytterligare information besöker du www.safehome.dk

Ansvarsfraskrivelse

SafeHome ApS tar forbehold om evt. fejl og mangler i ethvert henseende. Produktet skal ikke betjenes av barn eller personer, som ikke kan forventes å ha adekvate psykiske eller fysiske forutsetninger til å betjene det korrekt. Betjening skal alltid støttes av en kompetent voksen bruker. Produktet er ikke et leketøy, og skal aldri benyttes slik. Evt. rettelser vil bli foretatt uten ytterligere varsel.

Vi fraskriver oss ethvert ansvar for fejl, uheld, plager og ulykker som oppstår i forbindelse med bruk av SafeHome Network Video Recorder NVR903.

For support og ytterligere informasjon: www.safehome.dk

Vastuuvapautuslauseke

Safehome Aps ei ole vastuussa mahdollisista virheistä käyttöohjeissa.

Safehome Aps ei ole vastuussa viallisista tuotteista, epäsuorista, satunnaisista tai välillisistä vahingoista jotka aiheutuvat tai ilmenevät Safehome tuote käytöstä tai sen yhteydessä. Safehome Aps pidättää oikeuden muuttaa ja päivittää kaikkia tuotteen ja käyttöohjeiden osia ilman erillistä ilmoitusta.

Tämä tuote ei ole leikkikalua, eikä sitä tule sellaisenaan käyttää.

Kaikki tekijänoikeudet, tavaramerkit ja rekisteröidyt tavaramerkit ovat niiden omistajien omaisuutta.

Tuotetuen ja lisätietoa löydät osoitteesta: www.safehome.dk

